

2-Street SBR-Wastewater Treatment Plant of Village **BELOSLAV** (Bulgaria)



View of the 2-street SBR-WWTP of village BELOSLAV

- **Connection load:** 11,990 population equivalents
- **Sewer system:** combined system
- **Process objective:**

BOD ₅ <	25.0 mg/l
COD <	125.0 mg/l
TSS <	35.0 mg/l
N _{total} <	15.0 mg/l
- **Pre-treatment of sewage:** one automatic screen, one aerated sand trap, distribution channel with 2 valves
- **Aeration-technology:** HyperClassic-mixing and aeration-system (2 ea./reactor), 3 blowers for generation of compressed air, O₂-sensors for control of air-input
- **Sludge-treatment:** storing and thickening of sludge
- **Start-up:** July 2007
- **Effluent quantity:** 2.640 m³/d (dry weather)
- **Operation results:**

BOD ₅ <	5.0 mg/l
COD <	50.0 mg/l
N _{total} <	10.0 mg/l
- **Treatment concept of biological stage:** extended aeration process as 4-street SBR-WWTP, including nitrification, denitrification and simultaneously stabilization of excess sludge
- **Control concept:** fully automatic control including remote servicing
- **Sludge-utilization:** agricultural use of excess sludge as liquid fertilizer



View from the access road to the two SB-reactors



Automatically controlled inlet valve for reactor no. 2



Service platform with drives for HyperClassic-stirrers



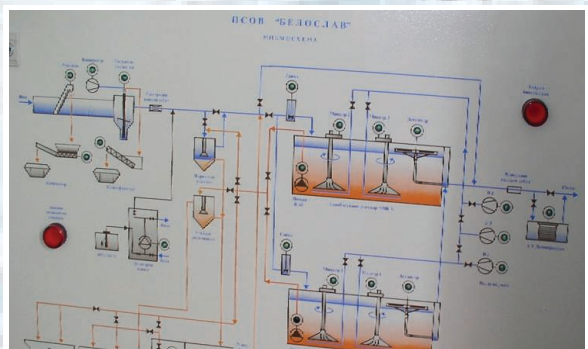
Mixer-body with aeration pipe



Detailed view of a mixing and aeration system



Clear water decanter with electrical winch



Partial view of the control panel