



2-Street SBR-Wastewater Treatment Plant of Village **BELOSLAV** (Bulgaria)



View of the 2-street SBR-WWTP of village BELOSLAV

- | | | | |
|----------------------------|---|--|--|
| • Connection load: | 11,990 population equivalents | • Start-up: | July 2007 |
| • Sewer system: | combined system | • Effluent quantity: | 2.640 m ³ /d (dry weather) |
| • Process objective: | BOD ₅ < 25.0 mg/l
COD < 125.0 mg/l
TSS < 35.0 mg/l
N _{total} < 15.0 mg/l | • Operation results: | BOD ₅ < 5.0 mg/l
COD < 50.0 mg/l
N _{total} < 10.0 mg/l |
| • Pre-treatment of sewage: | one automatic screen,
one aerated sand trap,
distribution channel with 2 valves | • Treatment concept of biological stage: | extended aeration process as 4-street SBR-WWTP, including nitrification, denitrification and simultaneously stabilization of excess sludge |
| • Aeration-technology: | HyperClassic-mixing and aeration-system (2 ea./reactor), 3 blowers for generation of compressed air, O ₂ -sensors for control of air-input | • Control concept: | fully automatic control including remote servicing |
| • Sludge-treatment: | storing and thickening of sludge | • Sludge-utilization: | agricultural use of excess sludge as liquid fertilizer |



View from the access road to the two SB-reactors



Automatically controlled inlet valve for reactor no. 2



Service platform with drives for HyperClassic-stirrers



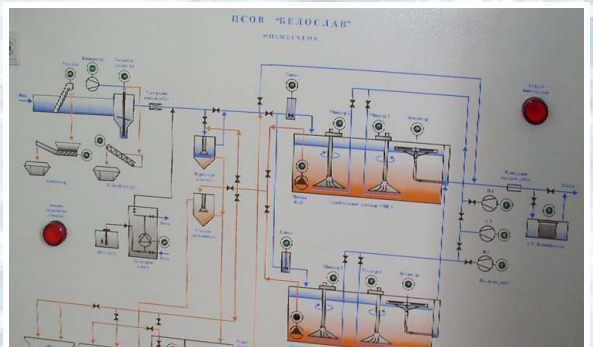
Mixer-body with aeration pipe



Detailed view of a mixing and aeration system



Clear water decanter with electrical winch



Partial view of the control panel